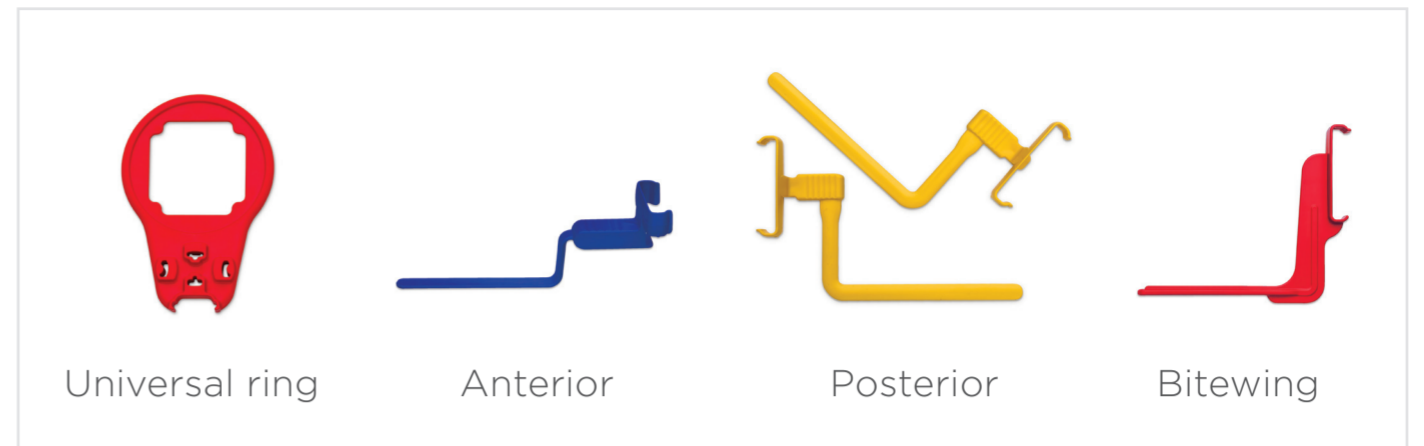
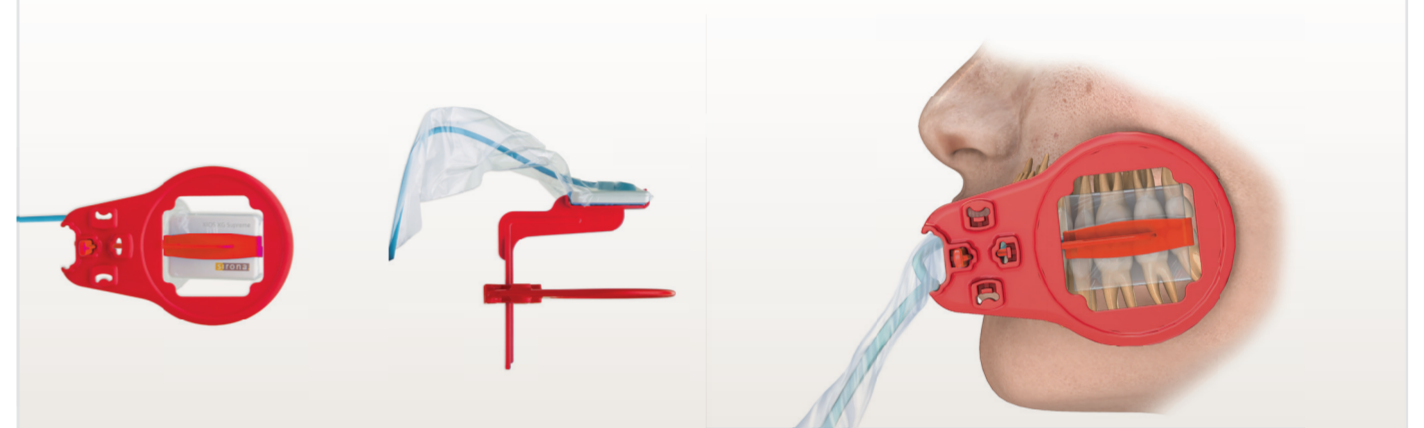


Xios XG Aimright sensor holder system



1 Bitewing

For bitewing exposures, place the sensor so that it is between the tongue and the teeth or so that the lower edge of the sensor is on the middle of the tongue and the upper edge at the level of the palate. This helps to avoid pain for patients with a high floor of the mouth. The bite block should be located directly above the teeth to be imaged. Align the sensor in orthoradial direction to avoid overlapping interdental spaces in the image. Ensure that the ring is as close to the patient's face as possible and place the X-ray tubehead against the ring parallel to the red rod.

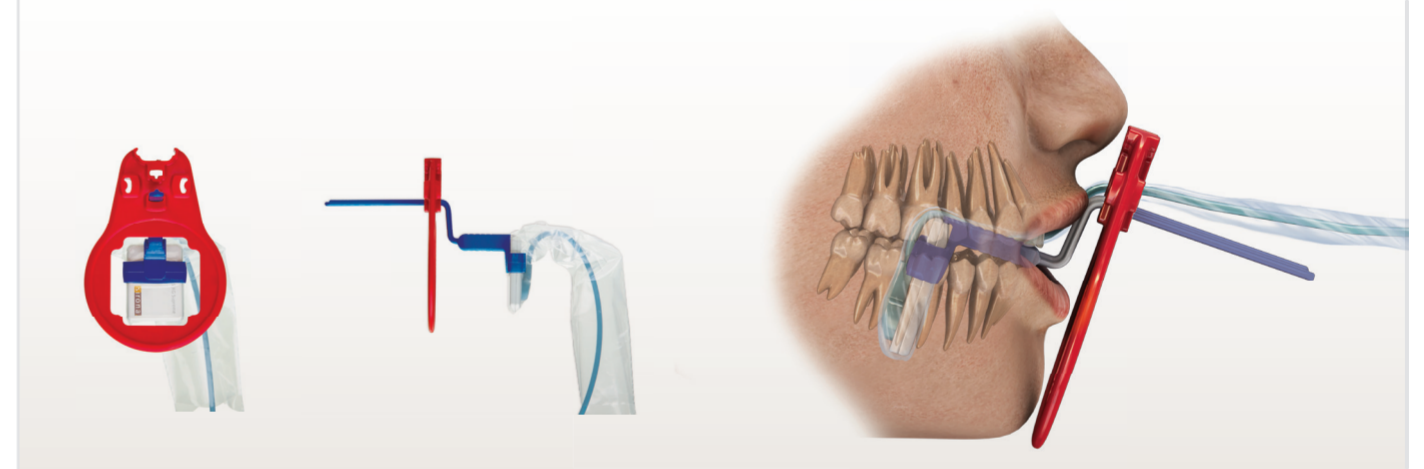


2 Upper jaw anterior tooth

Place the sensor in the anterior upper jaw so that the upper end of the sensor is located approximately in the region between the premolars 15 and 25. When the mouth is closed, the sensor will be aligned parallel to the tooth axis of the anterior teeth. Please ensure that the anterior teeth bite down on the bite block of the sensor holder in terminal occlusion. Position the sensor cable lateral to the bite block. Ensure the ring is as close to the patient's face as possible and place the X-ray tubehead against the ring parallel to the blue rod.

3 Lower jaw anterior tooth

Place the sensor in the anterior lower jaw on the tongue in the region of the premolars. Support the positioning of the sensor by guiding the blue rod of the holder upwards when closing the mouth. This ensures that the root tips are also properly imaged. Position the sensor cable lateral to the bite block. Ensure the ring is as close to the patient's face as possible and place the X-ray tubehead against the ring parallel to the blue rod.

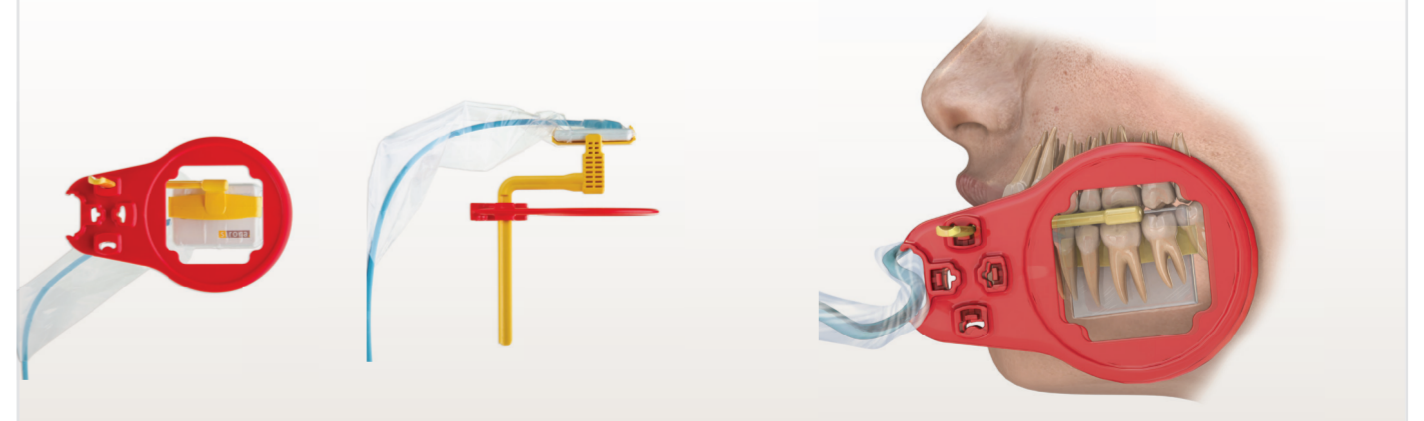


4 Upper jaw posterior tooth

Place the sensor in the posterior tooth region of the upper jaw so that the upper edge of the sensor is in the middle of the palate. Align the sensor in orthoradial direction to avoid overlapping interdental spaces in the image. When the mouth is closed, the sensor will be aligned parallel to the tooth axis of the posterior teeth. Do not hold the rod of the holder when the patient closes his mouth. Ensure the ring is as close to the patient's face as possible and place the X-ray tubehead against the ring parallel to the yellow rod.

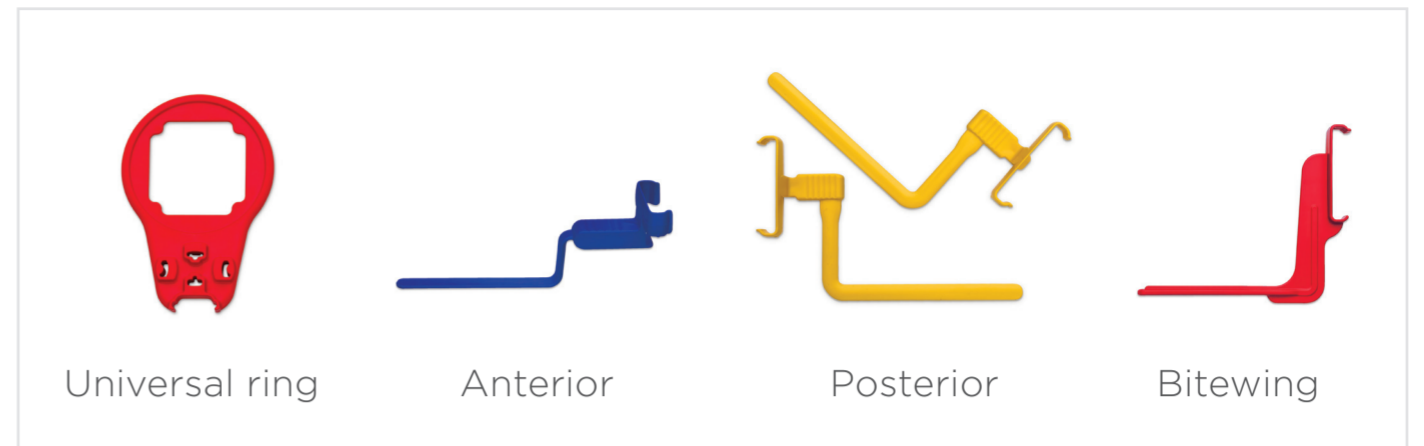
5 Lower jaw posterior tooth

Place the sensor in the posterior tooth region of the lower jaw so that the sensor is located between the tongue and the teeth or so that the lower edge of the sensor is on the middle of the tongue. This helps to avoid pain in patients with a high floor of the mouth. The bite block should be directly above the teeth to be imaged. Support the positioning of the holder by guiding the yellow rod upwards slightly when closing the mouth to ensure that the root tips are included in the image. Ensure that the ring is as close to the patient's face as possible and place the X-ray tubehead against the ring parallel to the yellow rod.

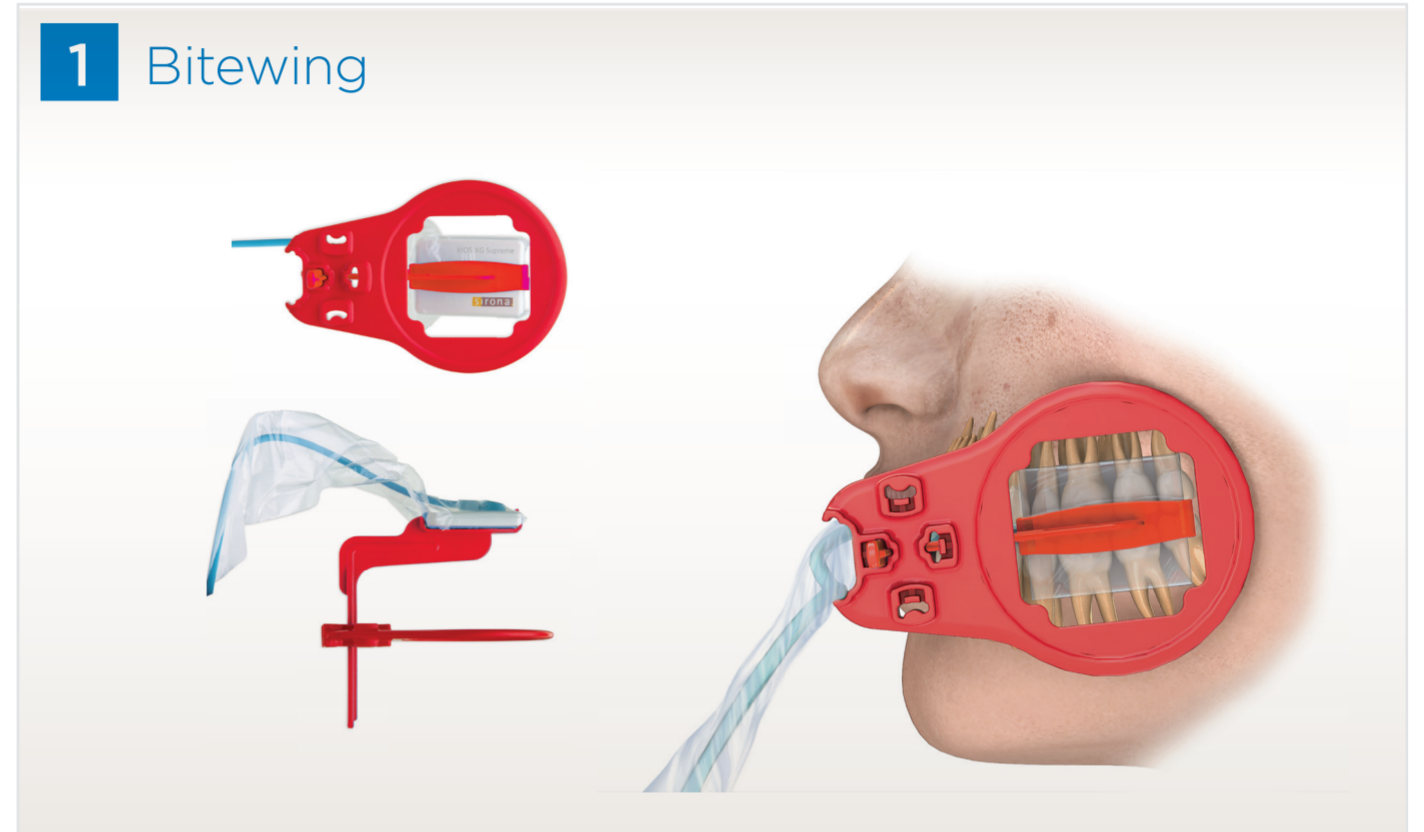


www.dentsplysirona.com

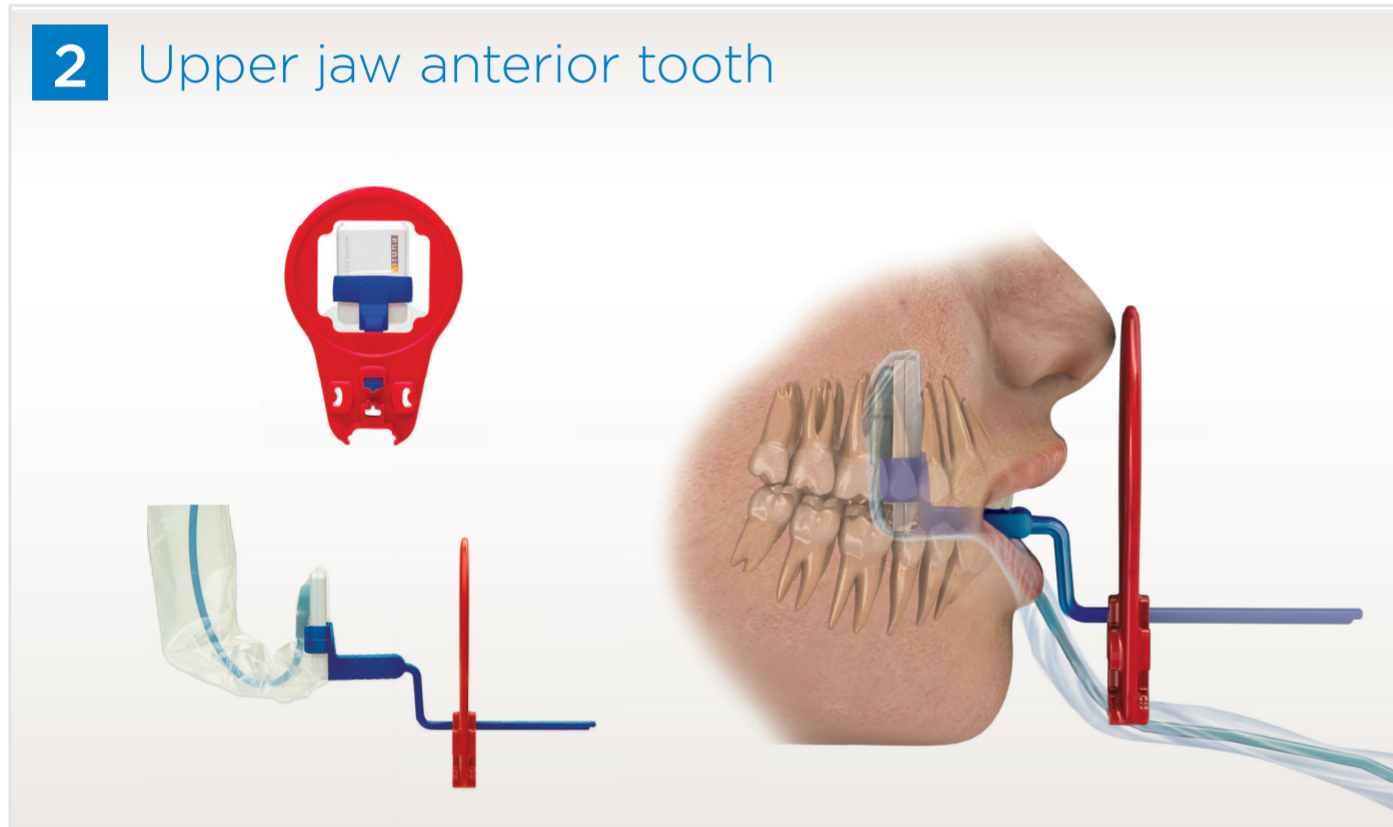
Xios XG Aimright sensor holder system



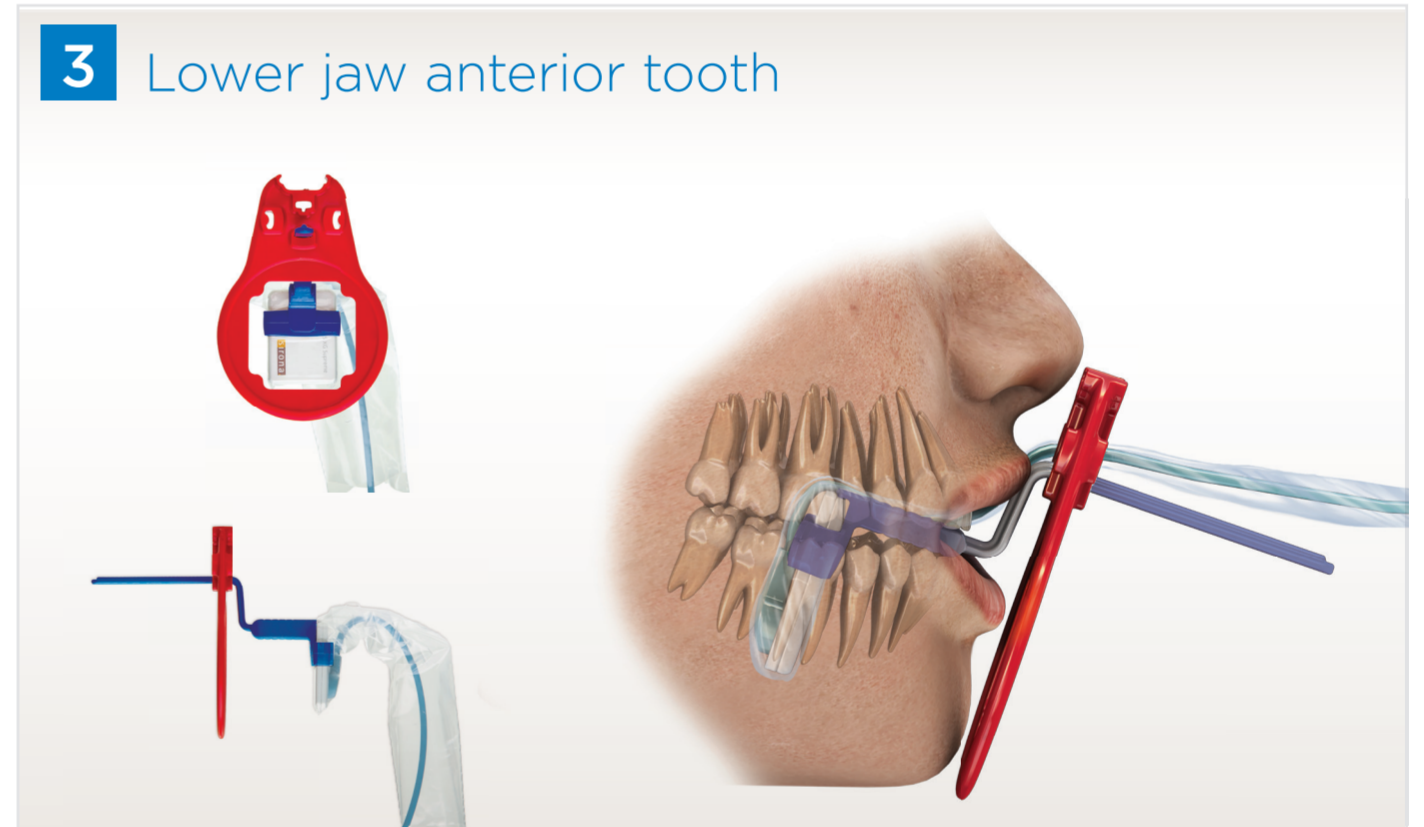
1 Bitewing



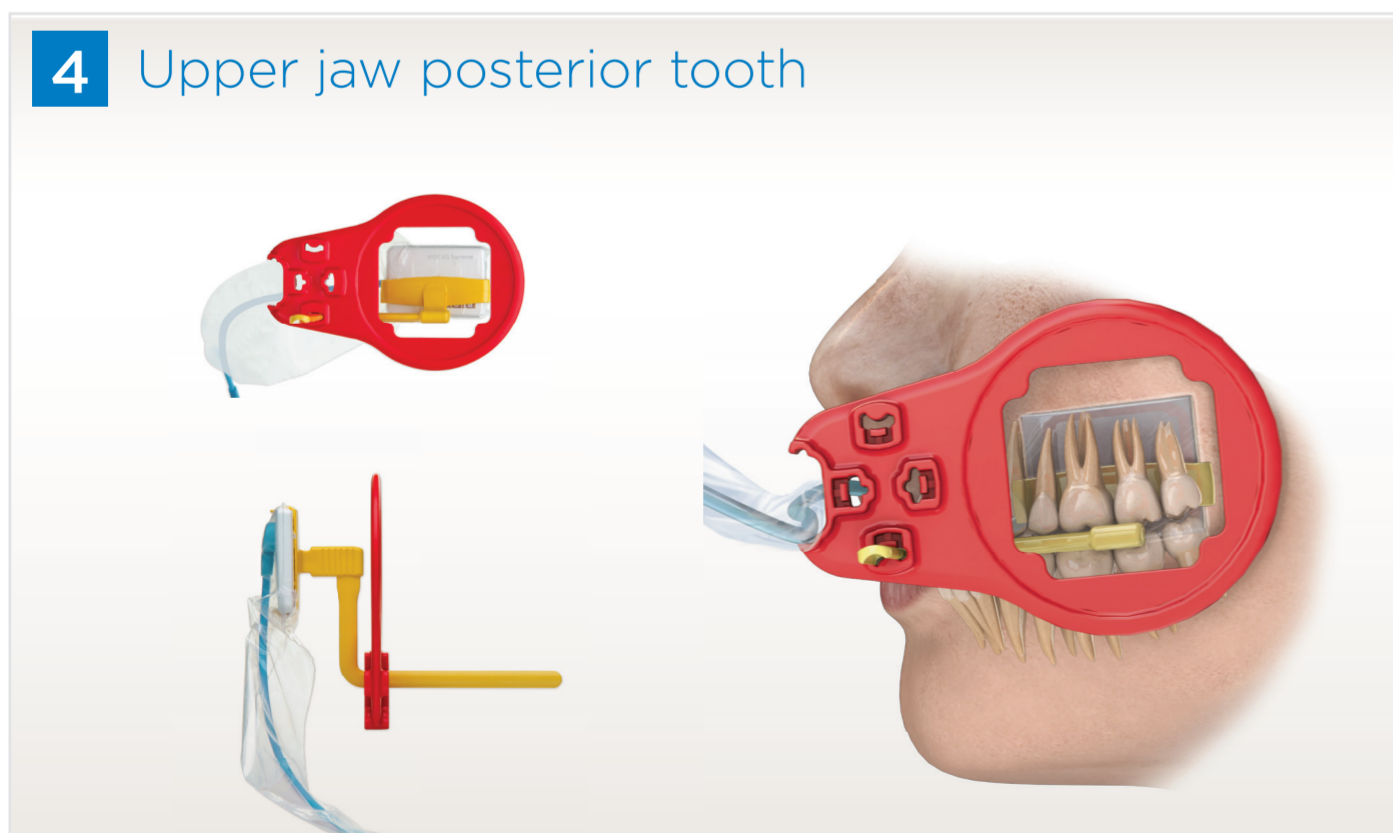
2 Upper jaw anterior tooth



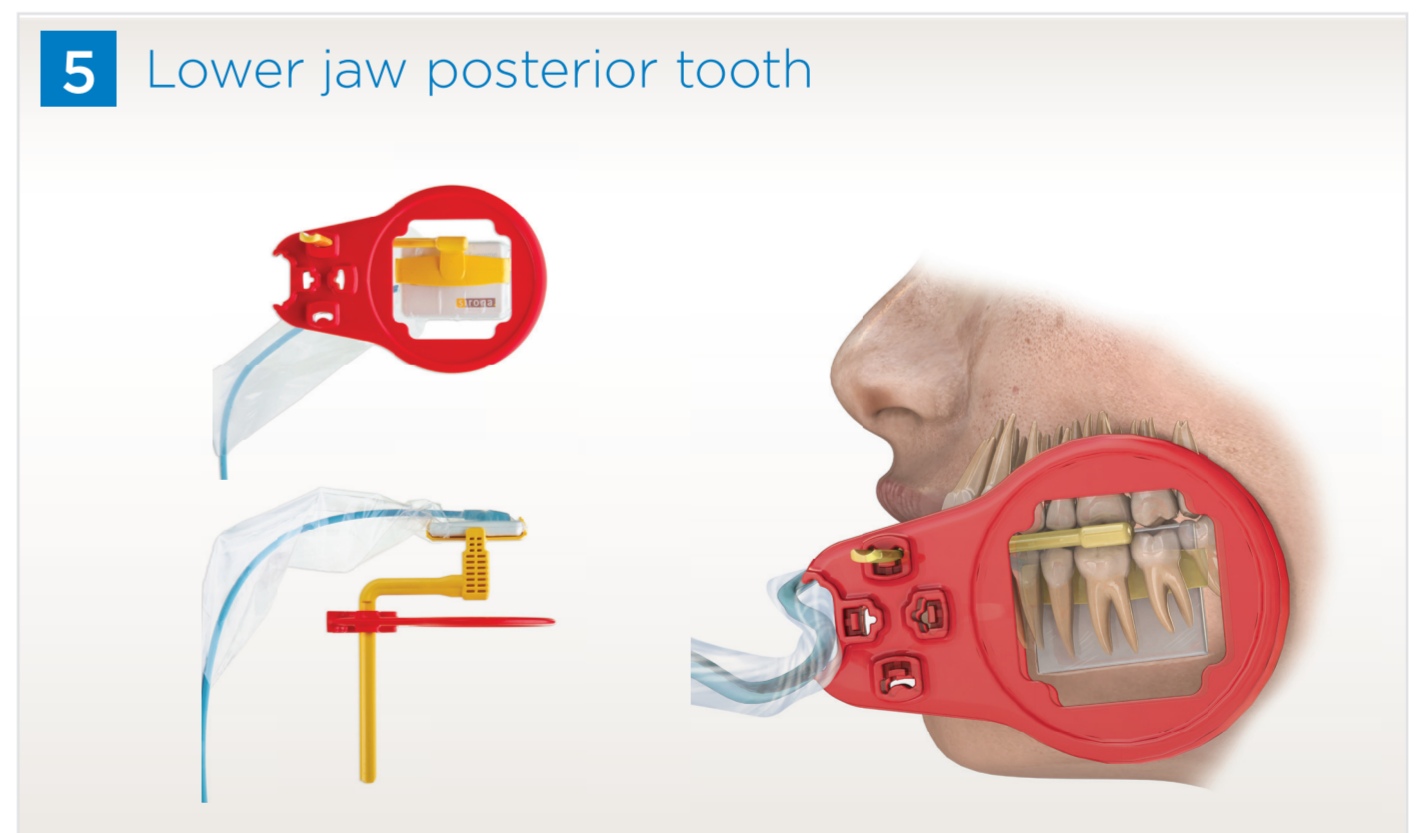
3 Lower jaw anterior tooth



4 Upper jaw posterior tooth



5 Lower jaw posterior tooth



www.dentsplysirona.com