

MICROSS MICROSS *curve* MICROSS *curve max*



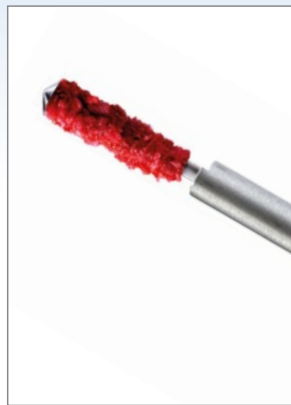
**Minimally invasive
single-use device for manual
cortical bone harvesting**



MICROSS

MICROSS *curve*

MICROSS *curve max*



MICROSS is a bone-harvesting device specifically engineered for surgical techniques that reduce post-operative discomfort. Its exclusive microblade ensures excellent cutting performance, allowing clinicians to easily collect autologous bone shavings. Harvest only the amount of bone strictly required for the defect and keep the procedure as minimally invasive as possible for your patients.

Preservation of cellular integrity

The harvesting technique ensures viable bone particulate rich in functional osteocytes, maintaining the biological potential required for graft integration¹.

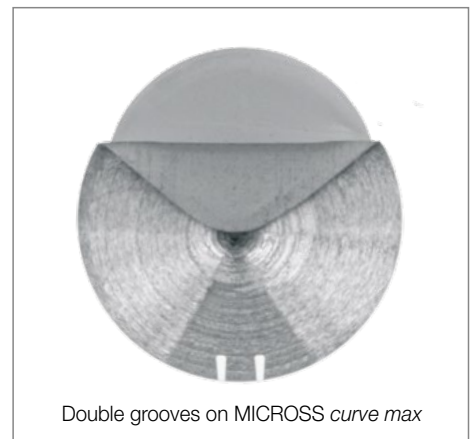
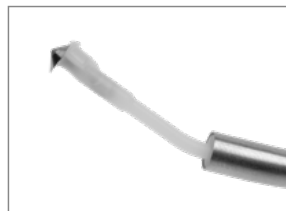
With its distinctive shape and a diameter of just 5 mm, it is designed for a minimally invasive approach and remains easy to handle even in narrow anatomical areas, making bone harvesting a straightforward and efficient procedure.



New 27° curvature

The ergonomic design of the **MICROSS curve** allows clinicians to easily access retromandibular, palatal, and other hard-to-reach areas.

The patented **MICROSS curve max** with a dual-groove blade divides the harvested bone into smaller fragments, maximizing their specific surface area. This configuration promotes an environment favorable for cellular adhesion and the release of osteogenic factors.



Double grooves on MICROSS *curve max*

1. Bacci C et al.: Clin Oral Impl Res 2011; 22: 600-05 (Clinical study)

Ref. 4049	MICROSS	1 sterile disposable unit, chamber capacity 0.25 cc
Ref. 5489	MICROSS <i>curve</i>	1 sterile disposable unit, chamber capacity 0.25 cc
Ref. 5594	MICROSS <i>curve max</i>	1 sterile disposable unit, chamber capacity 0.25 cc



META TECHNOLOGIES S.R.L.
VIA E. VILLA 7, 42124 REGGIO EMILIA, ITALY
TEL. +39 0522 502311

► info@metahosp.com
► www.metahosp.com

